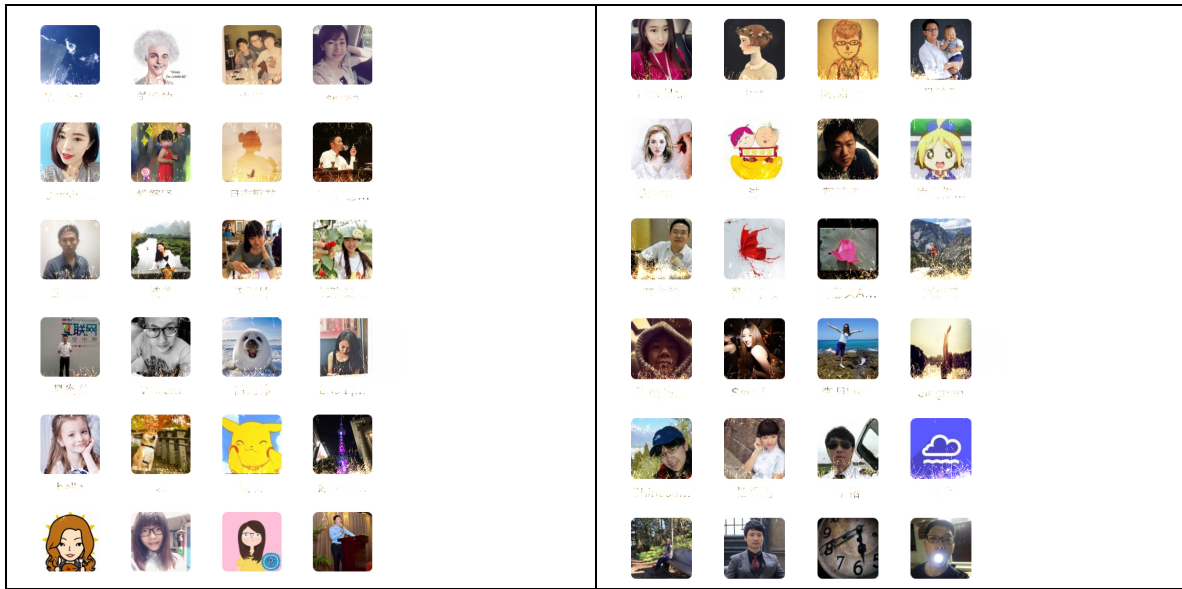
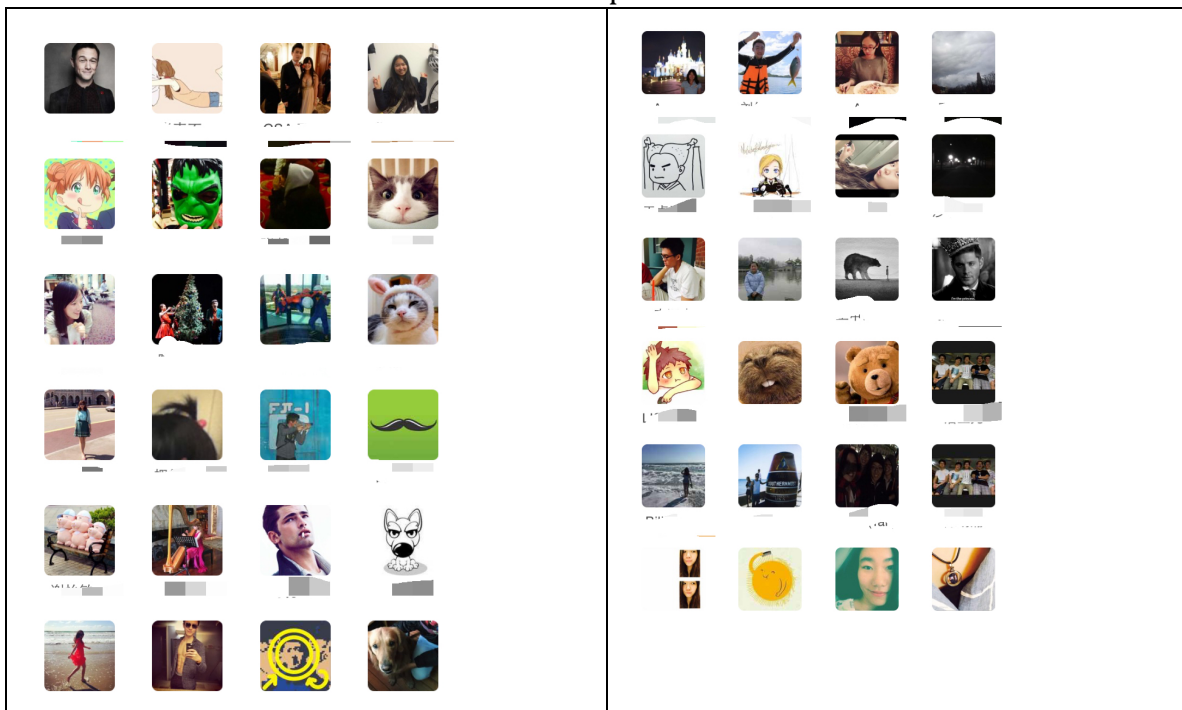


In this project, I am going to analyze the profile pictures in two groups in the Wechat, an online chatting platform. People in the first groups are above 25 years old and at work. People in the second group are my friends and are currently studying in CMU. All of them are under 21 and come from different places. Since these two groups of people are so differ in ages, I will analyze the data individually and then compare the result and exam the behaviors.

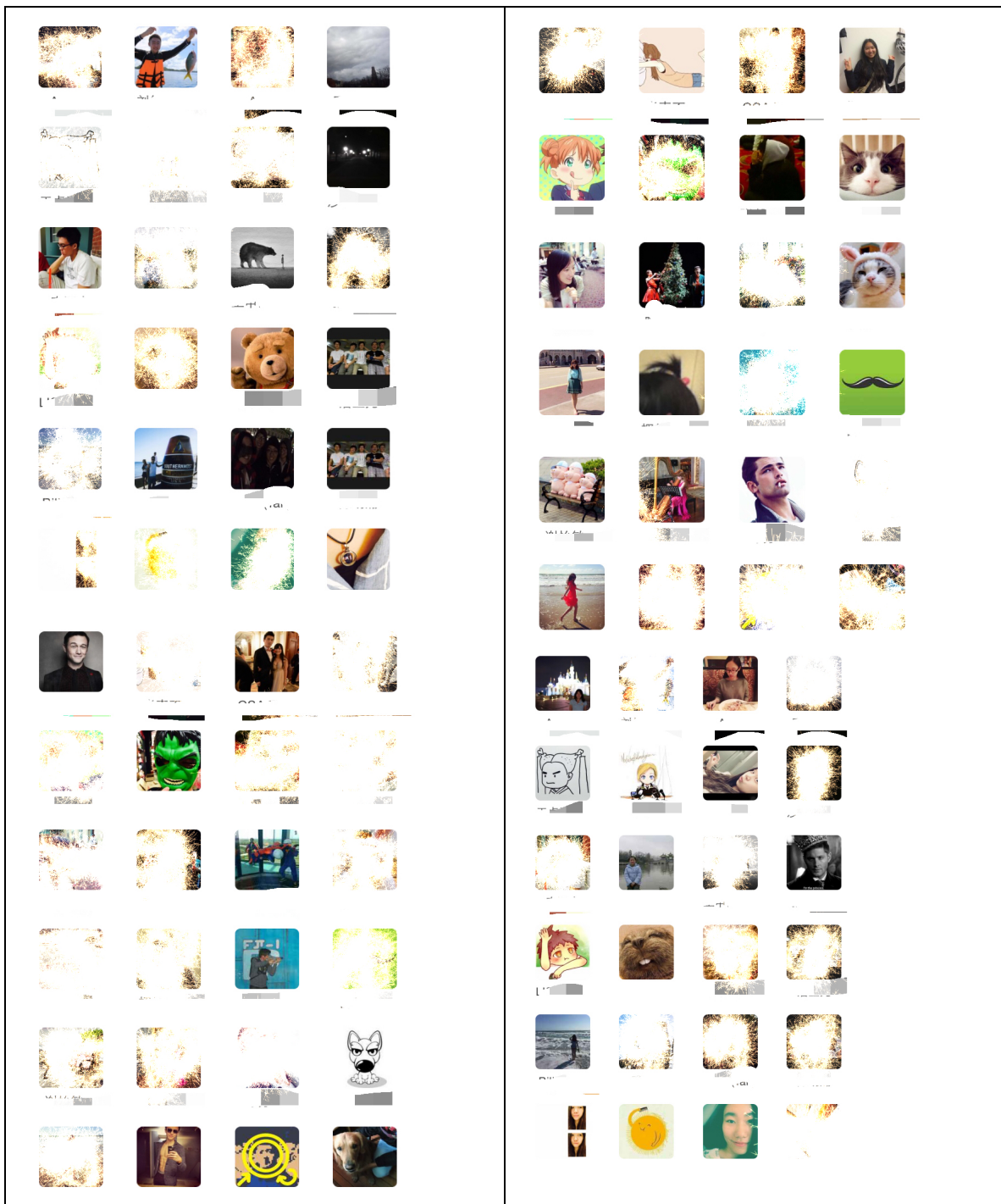


Group 1



Group 2

So firstly, I am going to divide group2 into two small groups according to their genders and compare the differences and similarities.

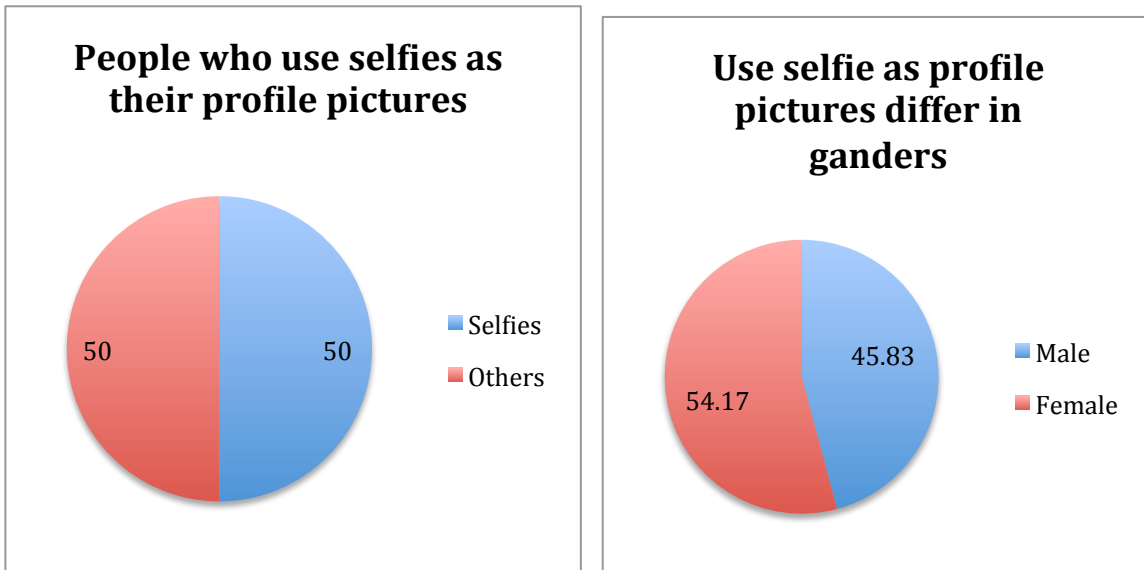


Male

Female

There are 20 males and 28 females.

How many people in group 2 are using selfies?
 And what is the percent of males and females who use selfies?

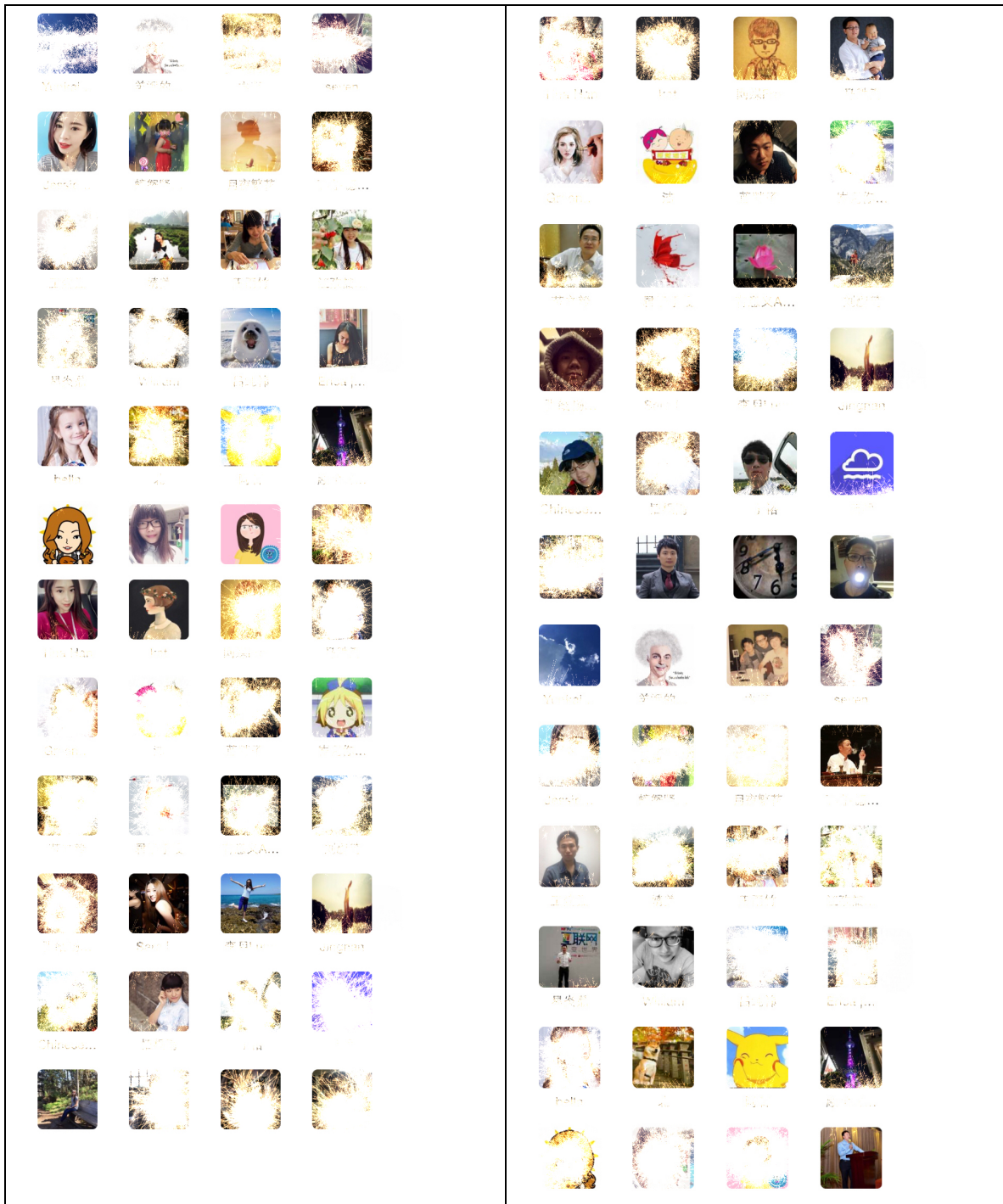


There are exactly half of people who use their selfies as their profile pictures. Among those people who use selfies, there are 54.17% of females and 45.83% of males. In general, people tend to use their selfies to present themselves. There is no big difference between the number of females and males who use selfies.

More information:

Male	Female
1. There are three people use animal pictures	1. There are three people use animal pictures
2. Among all male selfies, there are three people use group pictures.	2. Among all female selfies, there is no one use group pictures.
3. Males have less tendency to use animated pictures	3. Females are more likely to use animated pictures.

Secondly, I am going to divide group1 into two parts: female and male.



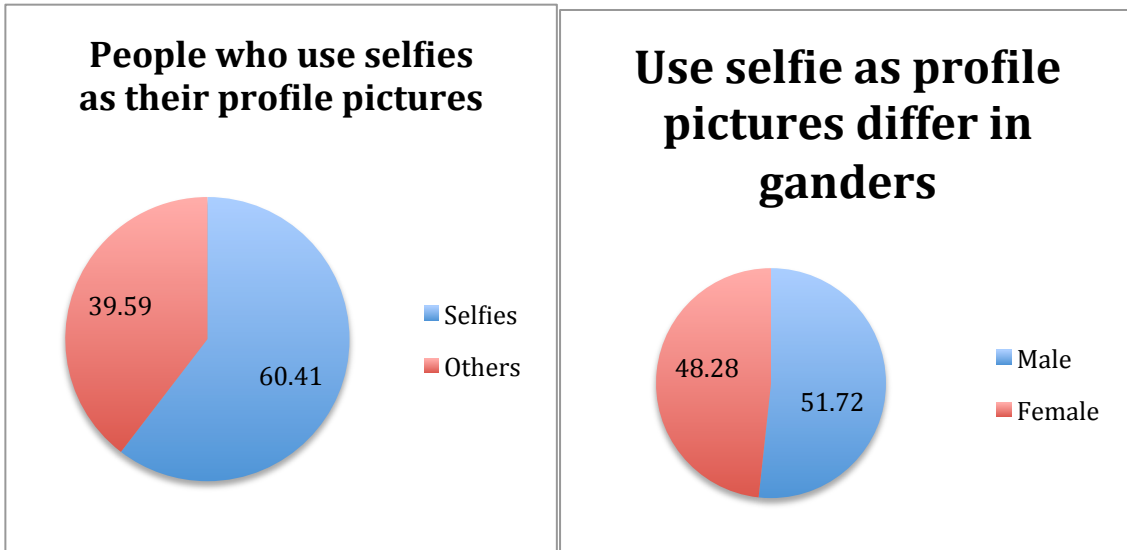
Female

There are 21 females and 27 males

Male

How many people in group 2 are using selfies?

And what is the percent of males and females who use selfies?



There are 60.42% of people who use their selfies as their profile pictures. Among those people who use selfies, there are 48.28% of females and 51.72% of males.

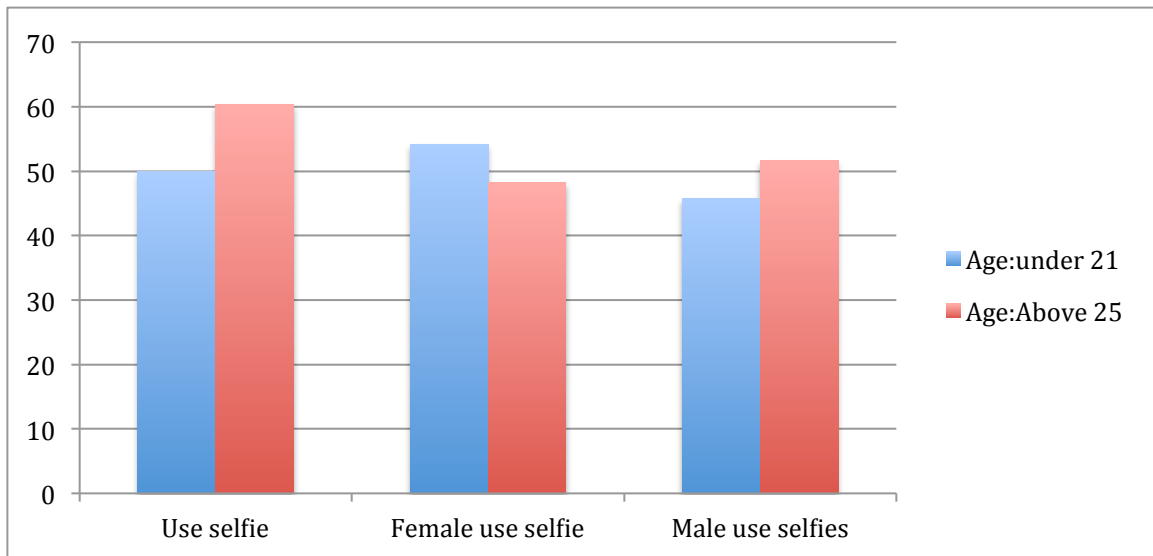
In general, people tend to use their selfies to present themselves. There is still no big difference between the number of females and males who use selfies.

More information:

Male	Female
1. There is a person who uses animal pictures	1. There is a person who uses animal pictures
2. Among all male selfies, there is a person who uses group pictures.	2. Among all female selfies, there is no one who uses group pictures.
3. There are six males who use animated pictures	3. There are three females who use animated pictures

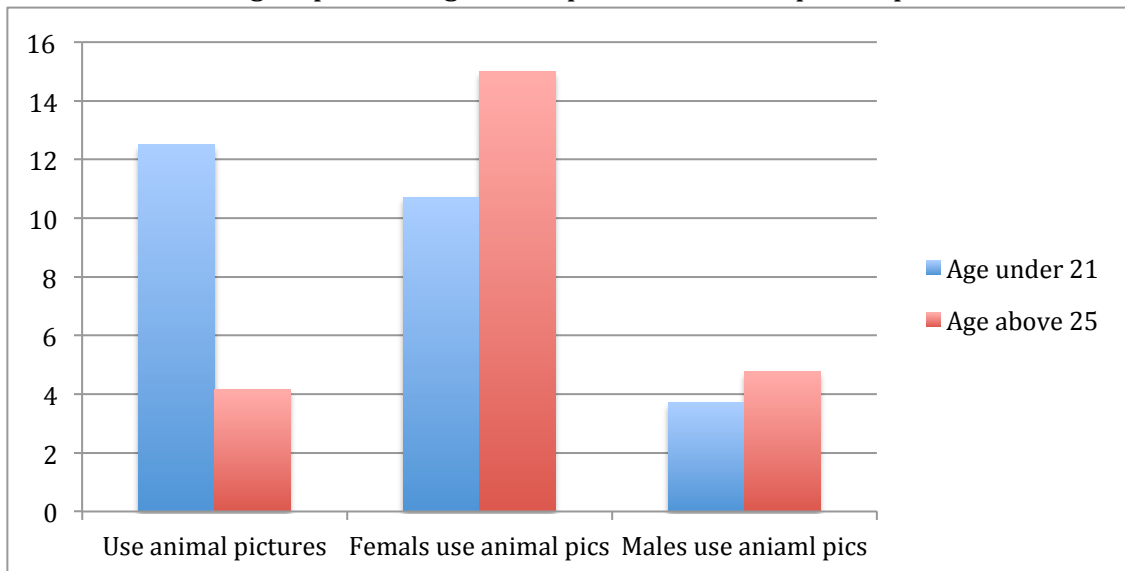
Lastly, I am going to contract the result from both groups.

Difference in two groups of selfie behaviours?



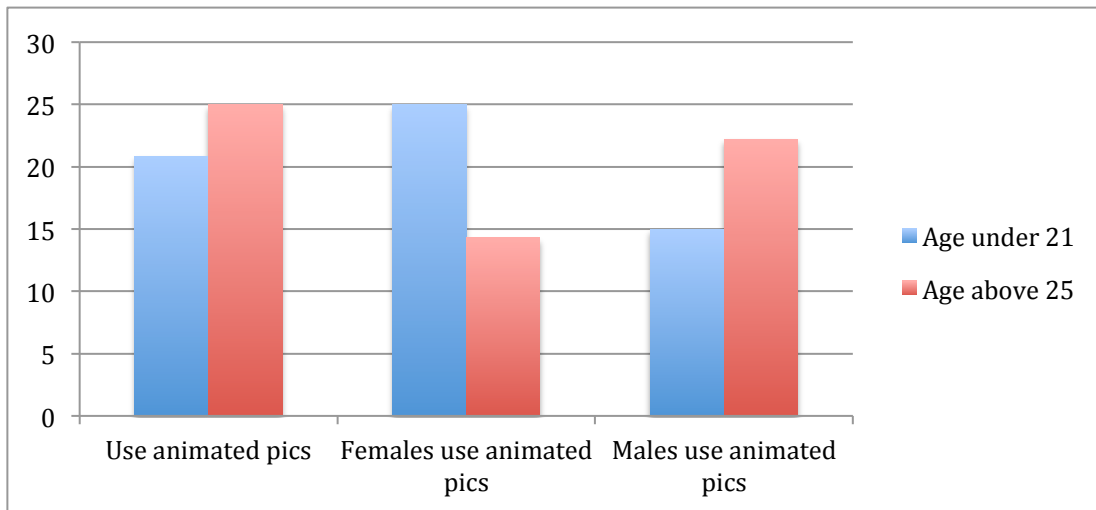
In general, people whose age is above 25, are more likely to use selfies. And as females get older, they are less likely use selfies, but males are more likely to use selfies. I think it is because males become more confident because of their success in career.

Difference in two groups of using animal pictures as their profile pictures?



In general, people whose age is under 21, are more likely to use animal pictures. And as females get older, they are more likely use animal pictures, but males have not changed a lot. I think because women become more sentimental as they grow up.

Difference in two groups of using animated pictures as their profile pictures?



In general, people whose age is above 25, are more likely to use animated pictures. And as females get older, they are less likely to use animal pictures, but males are more likely to use them. I think because women become more matured as they grow up.

In conclusion, the age and gender do actually influence people's choice of selecting profile pictures. In addition, I don't think gender, regardless of the effect of age, affects people to choose profile pictures that much since people seem to have similar behaviors. However, I find out that age is the main factor after I analyzed the difference of behavior in ages. I think age causes a big difference because people's personality and social status varies.